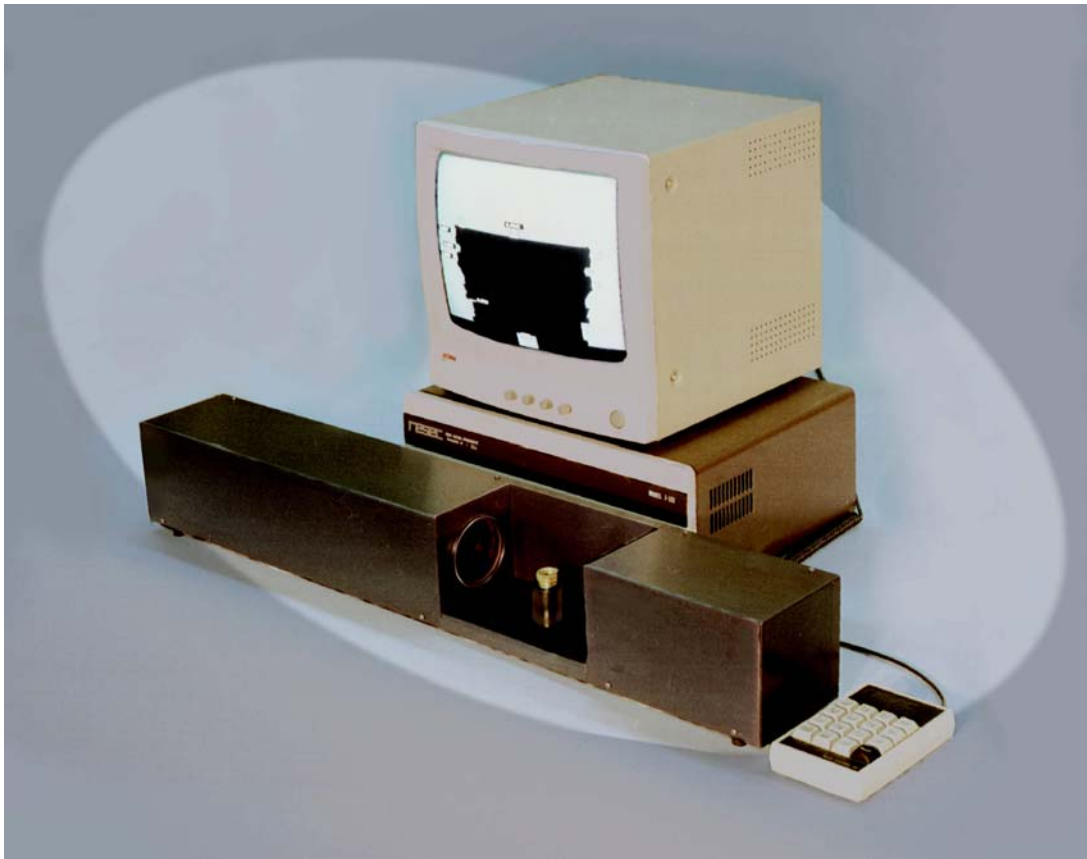


# RESEC

RESEC SYSTEMS, INCORPORATED

[www.resecsystems.com](http://www.resecsystems.com)

## Model J181R Digital Video Gage Automatic Measurement for Round Parts



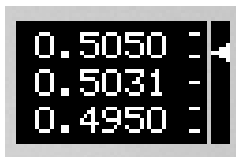
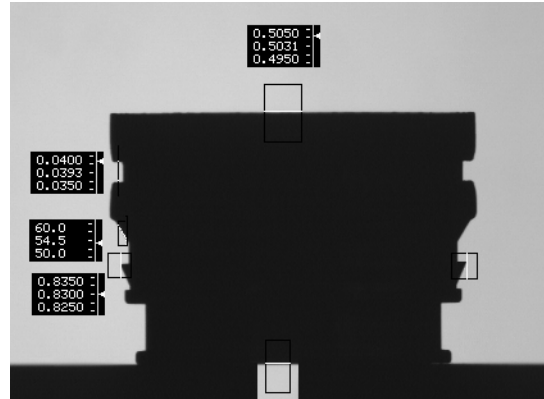
- Multiple Measurements
- Non Contact Technology
- Max, Min, Concentricity, Out-Of-Round
- Accuracies to  $\pm 0.0001$ "

RESEC SYSTEMS, INC. 93-A South Railroad Ave. Bergenfield, NJ 07621  
Phone: (800) 394-6758 Fax: (201) 384-6990 email: [sales@resecsystems.com](mailto:sales@resecsystems.com)

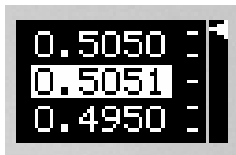
Four critical dimensions are measured on the profile of a turned part.

The measurements are repeated as the part is rotated, every 15° over a total of 360° (24 readings).

The measurements, tolerances, and rotational increments are fully programmable.



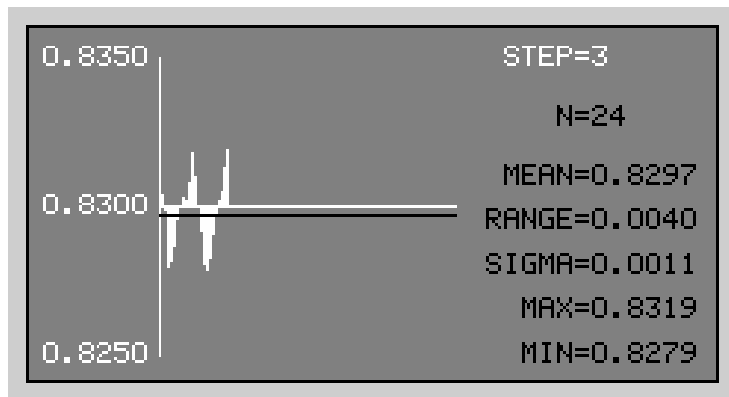
Each measurement (0.5031) is displayed along with the high (0.5050) and low (0.4950) tolerance limits. An analog style indicator shows the relative position of the measurement with respect to the limits (arrow).



If the measurement is outside the tolerance limits, the measurement (0.5051) is highlighted to call the operator's attention.

After all the measurements are taken, they can be displayed graphically along with general statistical data on the unit's monitor.

The adjacent graph shows the 24 diameter readings, taken every 15° (Note the two redundant 180° cycles).



The measurements and / or statistical data can also be directly exported in real time to Microsoft's Excel® or your data collection system via the unit's serial port.

The system can store a virtually unlimited number of part inspection programs, each with specific dimensions, tolerances, and rotational increments.

Typical inspection cycles range from 1 to 30 seconds, depending on the complexity of the part.