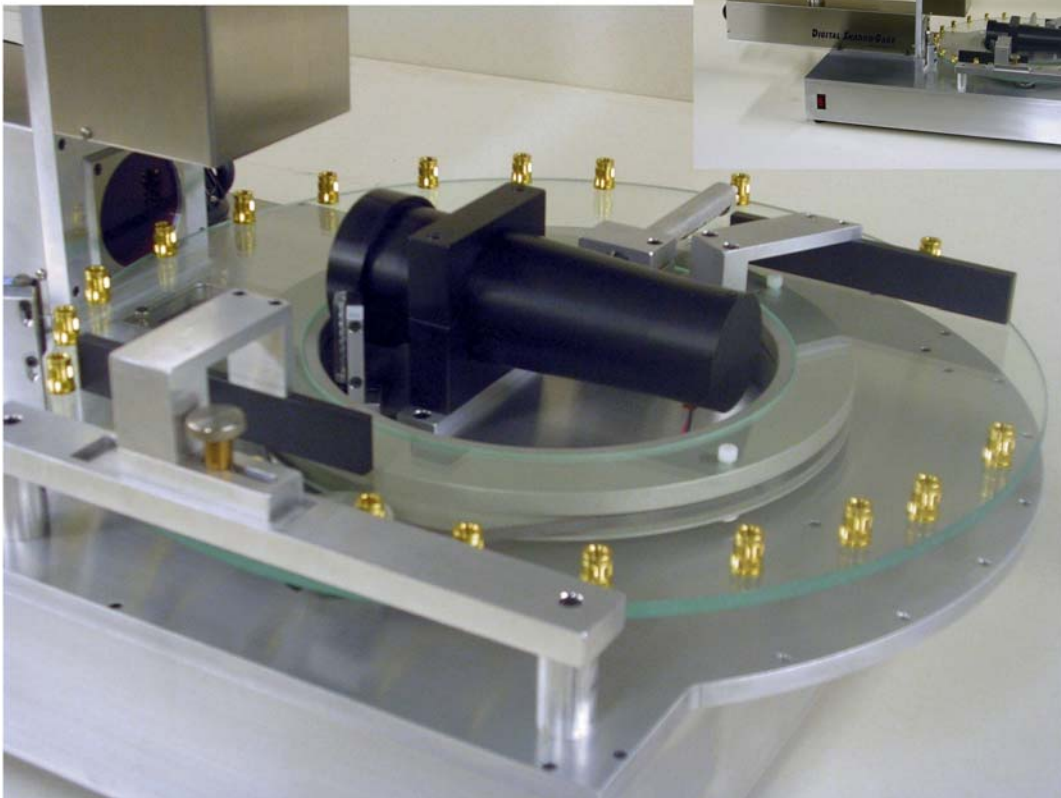


RESEC

RESEC SYSTEMS, INCORPORATED

www.resecsystems.com

Model J192 Flat Platen Sorter



- ✓ **100% Inspection**
- ✓ **Zero Defect**
- ✓ **Up to 10,000 Parts / Hour**
- ✓ **Accurate to ± 0.0001 "**

- ✓ **Non-Contact Technology**
- ✓ **2 Camera Capability**
- ✓ **Flexibility for Different Parts**
- ✓ **Easy to Operate**

Operation

The Model J192 Sorter utilizes a rotating glass platen to transport, align, measure, and sort your parts.

Small parts, such as screw-machine, molded or stamped parts can be readily dropped onto the rotating platen from a vibratory feeder or similar device.

The glass platen provides an unobstructed view of both the part's profile and top view, which are captured by two cameras.

Precision optics and a high speed strobe are used to obtain a gage quality, blur free image of the moving parts.

The part's dimensions are extracted from the image in a fraction of a second (Fig 1). If all dimensions are within tolerance, the part is ejected by a controlled air jet (Fig 2), which places the acceptable parts in the ACCEPT bin. The rejects simply remain on the platen and are mechanically dropped into the REJECT bin.

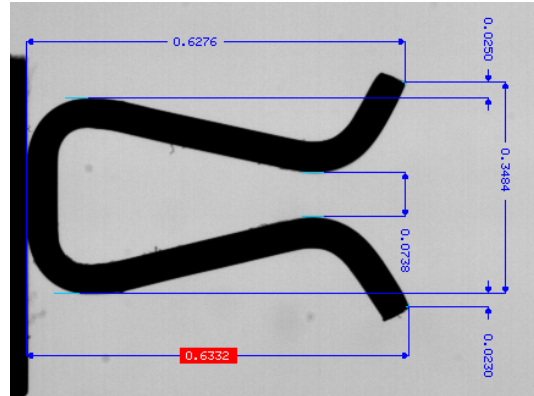


Fig 1.

Multiple measurements of each part are extracted instantly.

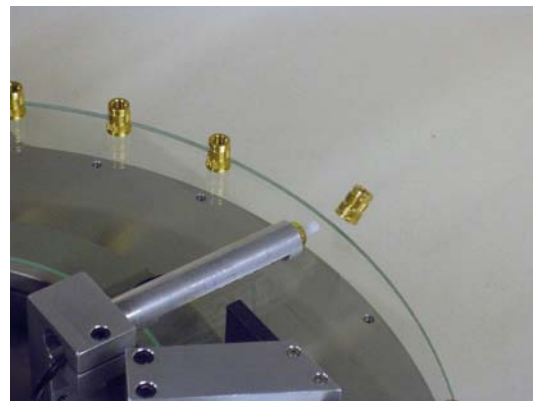


Fig 2.

Parts within tolerance limits are ejected from the platen by air jet or electric actuator

Specifications

Footprint:	36" x 18"
Monitor:	12"
Platen:	16" Dia.
Field of View:	0.250" – 1.750"
Platen Speed:	3" per sec.

Utility Requirements

Electrical:	120VAC
Comp. Air:	40PSI min